

Williamson County IL

Blairsville	Herrin	Lake Creek	Corinth
Carterville	West Marion	East Marion	Crab Orchard
Grassy	Southern	Creal Springs	Stone Fort

County Operations:

- 155.0700 203.5 Sheriff Dispatch, Repeats 156.0900 (Marion Tower)
- 154.8750 203.5 Sheriff Dispatch, Repeats 156.0900 (Cambria, Pittsburg Towers)
- 39.50000 000.0 Sheriff Old State Sheriff's net
- 159.2550 186.2 Sheriff Williamson County Major Case Squad, Repeats 156.0600

- 154.3700 100.0 Fire County Fire Net, Williamson County FPD, Repeats 154.0100
- 154.0700 000.0 Fire County Fire Dispatch (Southern IL Regional Fire Ops "Coalbelt Fire")
- 154.4450 100.0 Fire County Fire Alternate

- 155.2200 EMS Williamson County Ambulance Service, County EMS Net
- 155.3400 EMS MERCI 340
- 155.8050 EMS Williamson County Ambulance Service
- 154.5400 EMS Williamson County Ambulance Service

- 155.6100 179.9 EMA EMA Operations, Repeats 158.9700 (PL 203.5 in)
- 155.0850 179.9 EMA EMA Operations, Repeats 153.9050
- 155.0250 000.0 EMA ESMARN
- 45.24000 000.0 EMA EMA Operations
- 45.44000 103.5 EMA EMA State Net
- 155.0550 000.0 LG IREACH

- 453.1000 Hwy County Highway Department

- LTR Trunked System (Used for some County Services):
- 856.7625 857.7625 858.7625 859.7625 860.7625

Township Highway Departments: *(No township governmental units, highway maintenance is handled by the Williamson County Highway Department.)*

Blairsville		Creal Springs	Lake Creek
Carterville		East Marion	Southern
Corinth		Grassy	Stone Fort
Crab Orchard		Herrin	West Marion

Cities and Villages:

Bush *(Police Patrol by Williamson County Sheriff and Hurst PD)*
154.0700 000.0 Fire Bush FD, County Fire Net

Cambria
155.3100 Police Cambria PD ("CB-x")
154.0700 000.0 Fire Cambria FD, County Fire Net

Carterville
155.1900 Police Carterville PD
39.50000 000.0 Police Carterville PD, old State Sheriff Net
154.0700 000.0 Fire Carterville FD, County Fire Net

Colp *(Police Patrol by Williamson County Sheriff)*
154.3700 100.0 Fire Williamson County FPD, County Fire Net, Repeats 154.0100
154.0700 000.0 Fire Williamson County FPD, County Fire Local Ops
154.4450 100.0 Fire Williamson County FPD, County Fire Alternate

Crainville *(Police Patrol by Williamson County Sheriff)*
154.3700 100.0 Fire Williamson County FPD, County Fire Net, Repeats 154.0100
154.0700 000.0 Fire Williamson County FPD, County Fire Local Ops
154.4450 100.0 Fire Williamson County FPD, County Fire Alternate
458.7625 Data LG Local Utility telemetry

Creal Springs *(Police Patrol by Williamson County Sheriff)*
154.0700 000.0 Fire Creal Springs FD, County Fire Net

Energy
154.7250 Police Energy PD
39.50000 000.0 Police Old State Sheriff Net
154.0700 000.0 Fire Energy FD, County Fire Net

Freeman Spur *(Police Patrol provided by Franklin & Williamson County Sheriffs)*
154.3700 100.0 Fire Williamson County FPD, County Fire Net, Repeats 154.0100
154.0700 000.0 Fire Williamson County FPD, County Fire Local Ops
154.4450 100.0 Fire Williamson County FPD, County Fire Alternate

Herrin
155.4150 Police Herrin PD
151.0025 Fire Herrin FD F1, Repeats 158.9925
151.1225 Fire Herrin FD F2, Repeats 156.2325
154.0700 000.0 Fire Herrin FD, County Fire Net
154.4450 100.0 Fire Local Alternate
158.8200 LG Public Works
155.0550 000.0 LG IREACH
453.7250 Data LG Water Telemetry
152.3825 EMS Southern IL Hospital, Repeats 157.6425
155.3400 EMS EMS Operations
155.2800 EMS Herrin Hospital

Hurst Hurst PD ("HP-xx")
154.0700 000.0 Fire Hurst FD, County Fire Net ("1900's")
33.98000 000.0 Fire Hurst FD, Old Low band channel

Johnston City

155.4150 Police Johnston City PD
39.50000 000.0 Police Johnston City PD, old State Sheriff Net
154.0700 000.0 Fire Johnston City FD, County Fire Net
154.4450 100.0 Fire Fire Alternate
155.7600 LG Public Works
159.6825 LG City Operations
152.3375 School Johnston City CUSD, repeats 157.5975

Marion

855.2375 Police Marion PD
39.50000 000.0 Police Old State Sheriff Net
154.1750 136.5 Fire Marion FD, Repeats 150.7900
154.0700 000.0 Fire Marion FD, County Fire Net
154.0700 000.0 Fire Lake Egypt FPD, County Fire Net
453.0375 Fire Lake Egypt FPD, Mobile Extenders
154.9650 EMA EMA Operations
854.0625 LG Utilities Operations
854.1875 LG Utilities Operations
854.4125 LG Utilities Operations
155.0550 000.0 LG IREACH
155.7150 LG Public Works
173.2750 LG City Utilities
453.0500 LG Marion County Housing Authority
155.3400 EMS Marion Memorial Hospital
153.2375 EMS Heartland Regional Medical Center, Repeats 158.4225
155.2200 EMS Lifeline EMS
155.2350 EMS Lifeline EMS
155.3400 EMS Lifeline EMS
152.3150 EMS Lifeline EMS, Repeats 157.5750
155.1750 School Laidlaw School Busses
158.9850 Misc Lake Egypt Water District, Repeats 158.1750

Pittsburg

(Police Patrol by Williamson County Sheriff)
154.0700 000.0 Fire Pittsburg VFD, County Fire Net

Spillertown

Spillertown PD ("SP-x")
154.3700 100.0 Fire Williamson County FPD, County Fire Net, Repeats 154.0100
154.0700 000.0 Fire Williamson County FPD, County Fire Local Ops
154.4450 100.0 Fire Williamson County FPD, County Fire Alternate

Stonefort

(Police Patrol by Williamson County Sheriff)
154.3700 100.0 Fire Williamson County FPD, County Fire Net, Repeats 154.0100
154.0700 000.0 Fire Williamson County FPD, County Fire Local Ops
154.4450 100.0 Fire Williamson County FPD, County Fire Alternate

Whiteash

(Police Patrol by Williamson County Sheriff)
154.3700 100.0 Fire Williamson County FPD, County Fire Net, Repeats 154.0100
154.0700 000.0 Fire Williamson County FPD, County Fire Local Ops
154.4450 100.0 Fire Williamson County FPD, County Fire Alternate

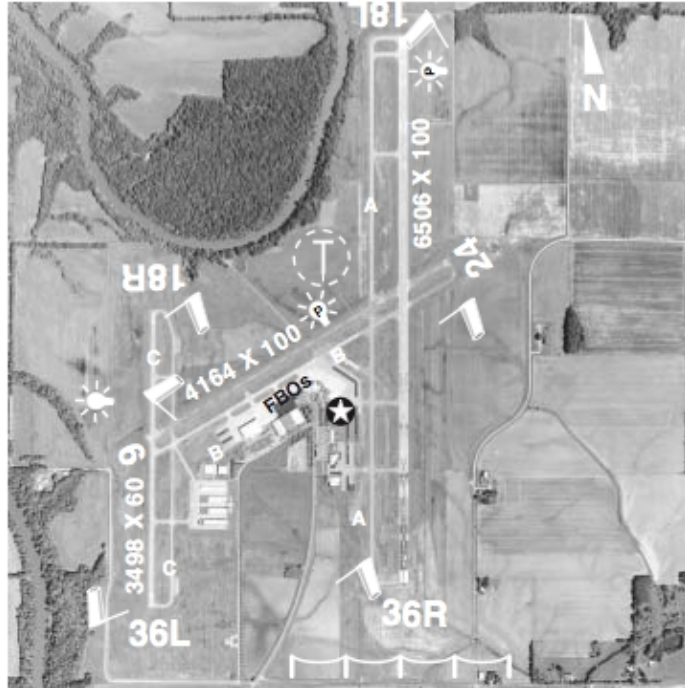
John A. Logan Community College

154.8450	Police	College PD, Repeats 158.9250
457.2000	Misc	College Operations
457.2500	Misc	College Operations
457.2750	Misc	College Operations
457.4500	Misc	College Operations
457.6750	Misc	College Operations

Williamson County Airport (Marion)

126.9000	Tower / CTAF
121.7000	Ground Control
122.9500	Unicom
119.6750	AWOS
453.9875	AWOS Link
127.7000	Approach
155.9400	Airport Authority

Owned and operated by the
Williamson County Airport
Authority.



Canadian National Railroad runs N-S thru Marion and Johnston City using 161.1900 (Road 1) and has another line thru the east edge of the county using 160.9200 (Road 2).

Union Pacific Railroad runs thru Hurst, using 160.410 for Road operations.

Crab Orchard & Egyptian Railroad runs at Marion, using 160.3500.